

# 640C 640MC

## Volumetric Meter - Composite Body with Electronic Register



### Main characteristics

**DN 15 to 20 and Coax, MAP 16, T50 (temperature range 0,1 to 50 °C)**

Light and robust

Easy to handle

Meets current and anticipated regulations for potable water

Environmentally friendly

Unrivalled accuracy and measuring range

High resistance to impurities and aggressive water

Quiet operation

Ready for wireless communication with integrated radio functionality (available in different frequencies)

Long lasting battery life expectation inclusive of metrology and radio function

The register includes a lithium battery

### Applications

The 640C/640MC is a high precision meter.

Due to its unique piston and measuring chamber design, the smallest drops of water are measured.

With the 640C/640MC you are assured of lasting metrology.

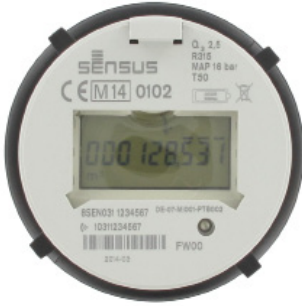
The 640C meter range includes an electronic register with integrated radio functionality which enables easy and fast communication.

Due to our broad range of system solutions you can adapt the 640C/640MC to all your AMR, AMI requirements.

The protection class of the electronic register of the 640C family is IP 68.

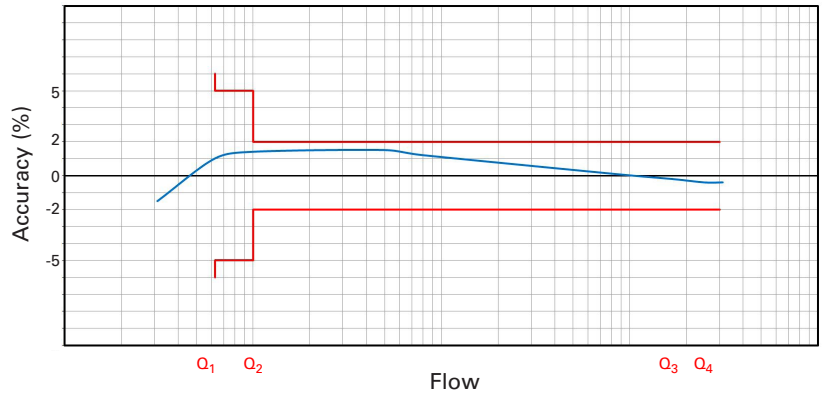
With a tamper proof design and its long life span you can be confident when selecting the 640C/640MC.

## Typical Marking



Markings may vary depending on particular markets or metrological specifications.

## Typical Accuracy Curve



## Accuracy and Reliability

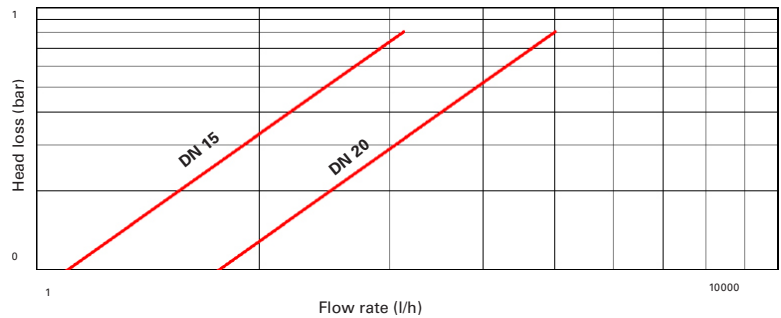
Thanks to the advanced design of its measuring chamber the meter has a low starting flow.

It can be supplied with metrological seal according to the MID regulation 2004/22/EC with a ratio up to R400.

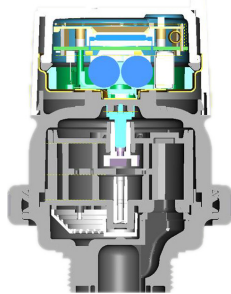
Foreign matter present in the water is filtered out by either the tubular strainer on the inlet or the seat strainer. All electronic components of the register are hermetically sealed and assembled in a glass copper casing which allow the protection class IP68.

The 640C/640MC water meter retains its metrological accuracy for many years of operation, even in difficult working conditions.

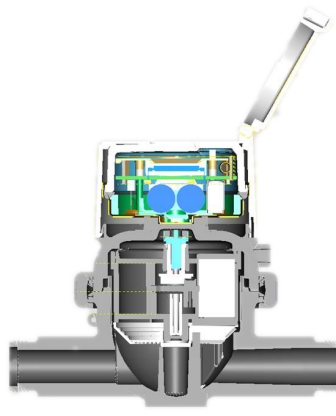
## Typical Head Loss Curve



## Cross Section



640MC



640C DN15

## Approvals

### EC type-examination certificate

in conformity with

- 2004/22/EC (MID)
- EN 14154:2007
- OIML R49:2006
- ISO 4064:2005

Q<sub>3</sub> 2,5 DE-07-MI001-PTB002

Q<sub>3</sub> 4 DE-09-MI001-PTB004

### Certificate of compliance for potable drinking water

KTW/DVGW (D) ACS (F)



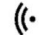

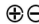
WRAS (UK) Hydrocheck (B)

KIWA ATA (NL)

## Legibility

The display with 9 digits (6 for m<sup>3</sup>, 3 for litres) ensures exceptional readability. The highest resolution in testing mode is 0.05 litres.

Icons are also displayed on the LCD to indicate important information have been registered:

-  Alarm is triggered
-  Low battery level is reached
-  Radio is activated
-  System is set up in hydraulic testing mode
-  ⊕ ⊖ indicates positive or negative flow

m<sup>3</sup> indicates the unit programmed in use

## Performance Data

### Metrological characteristics

Directive 2004/22/EC (MID) & EN 14154:2007

			Coaxial Manifold	Inline	
Nominal Size	DN	mm	#	15	20
Permanent flowrate	Q <sub>3</sub>	m <sup>3</sup> /h	2.5	2.5	4
Ratio "R"	Q <sub>3</sub> /Q <sub>1</sub>	R	40 / 80 / 160 / 315 / 400		
Maximum flowrate <sup>(1)</sup>	Q <sub>4</sub>	m <sup>3</sup> /h	3.125	3.125	5.0
Minimum flowrate <sup>(1)</sup> (tolerance ±5%)	Q <sub>1</sub>	l/h	6.25	6.25	10.0
Transitional flowrate <sup>(1)</sup> (tolerance ±2%)	Q <sub>2</sub>	l/h	10.0	10.0	16.0

<sup>(1)</sup> Values for R=400

## Dimensions and Weights

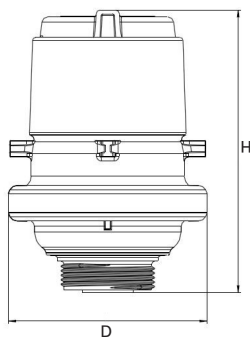
			Coaxial Manifold	Inline	
Nominal Size	DN	mm	#	15	20
Length	L	mm		170 <sup>(1)</sup>	190 <sup>(3)</sup>
Width	D	mm	101.7	101.7	113.5
Total height	H	mm	140.3	142.6	149
Height to pipe axis	h	mm		18.95	21.5
Tail	Diameter	inch	G 1½" B	G ¾" B <sup>(2)</sup>	G 1" B
Piece		mm	47.8	26.44	33.25
Thread	Pitch		2.31	1.81	2.31
Weight		kg	0.5	0.6	0.68

<sup>(1)</sup> Also available in length 110/114/115/130/134 and 165 mm

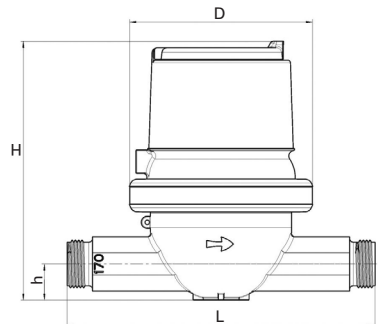
<sup>(2)</sup> Also available in length 165 and 190 mm with 1" threads

<sup>(3)</sup> Also available in length 165 and 220 mm

## Dimensional Diagram



640MC



640C

For the installation guidelines please refer to our website and the manual MD 1670 INT.

# 640C/640MC infrastructure

The 640C product range has SensusRF integrated technology providing the advantages of both uni- and bidirectional system architecture as described below. SensusRF is the optimized license free radio system for battery driven endpoints and repeaters. Scalable for mobile and remote reading without exchange of components, it is available in 433 MHz and 868 MHz.

**OMS**® compatible.

SensusRF offers two communication modes

## 1. Fixed Radio Network

- Auto configuration wizard (gateway sniffing for endpoints and repeaters)
- Integrating repeaters (up to 7 hops in a chain)
- Self-healing network (using alternative routes)
- Meter reading transparent and local
- Fast track alarms
- DMA snap shot (snap shot of a water network for evaluation)
- TCP/IP technology for the WAN communication
- High level of data security (end-to-end encryption)
- Enables cloud technologies, FTP and other remote database applications

## 2. Mobile read - Walk-by / Drive-by

- Unidirectional telegrams
- Bidirectional communication
- Spontaneous reception possible without route
- Configuration of the endpoint

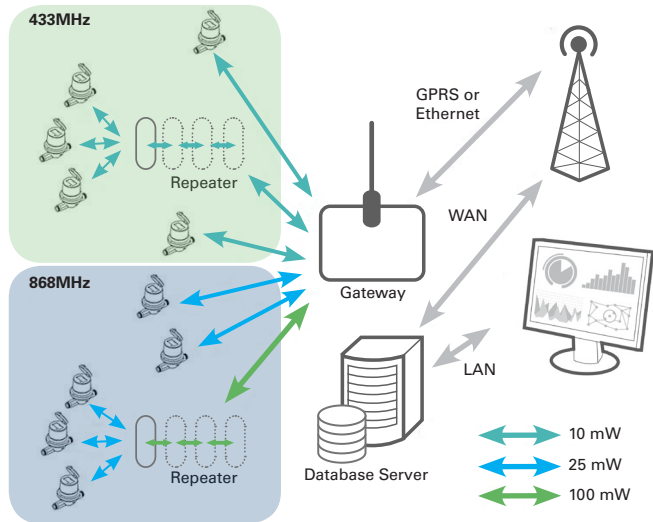
### SIRT (Sensus Interface Radio Tool)

SIRT is a radio modem for SensusRF radio, connected to a handheld via Bluetooth and using SensusREAD Mobile Reading software with the following features:

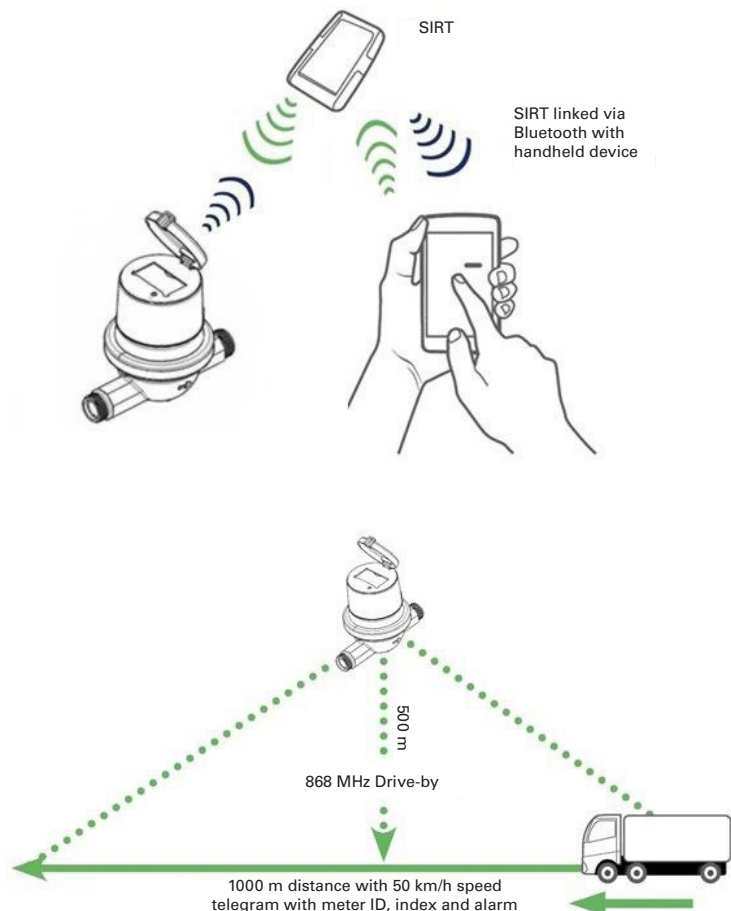
- Installation and readout of devices
- Reception of frequently transmitted radio messages from Sensus RF radio endpoints
- Request additional information from the radio endpoints
- Change configuration of radio endpoints (alarm, level settings...)

For further information please refer to the SensusRF brochure.

## 640C/640MC Fixed radio network - Remote Access & Monitoring



## Unidirectional/Bidirectional communication



**qualityaustria**  
Succeed with Quality

Certified according to ISO 9001  
Quality Management System Quality Austria Reg.no. 3496/0



14001 Subject to changes without prior notice.

**Allied Power**  
We Empower Your Business

奥  
华

Unit B, 11/F Long To Building,  
654-656 Castle Peak Road,  
Lai Chi Kok, Kowloon, Hong Kong

Tel: +852 3746 9033 Fax: +852 2120 8765

Email: [contact@alliedpower.com.hk](mailto:contact@alliedpower.com.hk)

Web: [www.alliedpower.com.hk](http://www.alliedpower.com.hk)